



School of Pharmacy - Study Away Syllabus

P2 Summer 2022 – Monday, June 6-Saturday, June 11, 2022

PHAR 6188 (Domestic) – Section CRN: #36636 – WEST TEXAS

Prescribed Elective: 1 credit hr/ Track: Global Health Colloquium

Study Away Coordinator	Denise I. Pinal, PharmD, BCPPS Office Phone: (915) 747- 5884 E-mail: denisepi@utep.edu
Director of Experiential Education	Jacquelyn P. Navarrete, PharmD, BCACP Office Phone: (915) 747-8520 E-mail: jpnavarrete@utep.edu
Director of Student Affairs	Carmen R. Ramos, MA Office Phone: (915) 747-8554 E-mail: crtorress2@utep.edu

Faculty Section Leads

Dr. Amanda M. Loya, PharmD, BCPS: amloya1@utep.edu, 915-747-8534 (Wichita, KS)

Dr. Michelle Martinez, MD, MPH: pmmartinez2@utep.edu (West Texas)

Dr. Jacquelyn P. Navarrete, PharmD, BCACP: jpnavarrete@utep.edu (Colorado Springs, CO)

Dr. Denise I. Pinal, PharmD, BCPPS: denisepi@utep.edu, 915-747-5884 (Ireland)

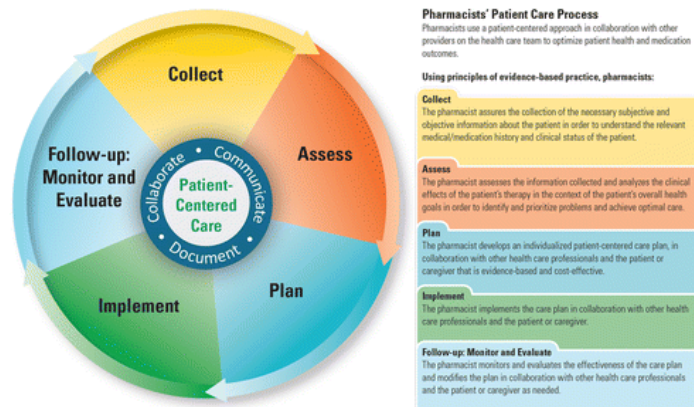
Dr. Jeri J. Sias, PharmD, MPH: jjias@utep.edu, 915-747-8599 (West Texas and DFW)

Office Hours

The Study Away faculty lead will provide office hours, prior to the experience, based on appointments. All appointments should be made at least 48 hours in advance (**NOTE: during Study Away, please contact faculty via text of TEAMS messages and faculty will contact as soon as possible**). Students may request an appointment with the faculty lead in person or via e-mail. During the Study Away experience, the faculty lead will be available during set group debriefing times and, additionally, as indicated in their specific syllabus. Questions related to the Study Away course in general should be directed to the Study Away coordinator, whereas questions related to a specific Study Away experience should be directed to the faculty lead for that experience.

Study Away Description

Included in the School of Pharmacy (SOP) curriculum is a study away component that requires all UTEP PharmD students to participate in a short-term (1-6 week) study away experience outside of the El Paso area. The UTEP PharmD Study Away component is aligned with the UTEP Edge, an institutional initiative that focuses on creating the “next generation of student engagement and professional preparation at UTEP” through curricular and co-curricular experiences including study abroad/study away. The Study Away experience is a prescribed (required) elective that is aligned with two courses in the curriculum: P1F- Culture Literacy and Community Health, P2S – Behaviors and Perceptions of Health Across Cultures and the Lifespan.



Source: <https://pharmacylibrary.com/doi/abs/10.21019/9781582122564.ch1>

Copyright © American Pharmacists Association. All rights reserved. Any use is subject to the Terms of Use.

This experience will introduce concepts of a pharmacist in a global setting related to the inner circle of the **Pharmacists' Patient Care Process** of *communication* and *collaboration*. Further the pharmacy student will be learning to **collect** subjective information as would be found in the Social History that explores: culture and community competency, social determinants of health, as well as opportunities and barriers to health care.

Study Away Learning Objectives (across sites)

At the conclusion of the Study Away experience, students should be able to:

1. Identify social determinants of health and their influences on health and well being
2. Seek to understand how their actions affect both local and global communities (AACU)*
3. Become informed, open-minded, and responsible individuals who are attentive to diversity across the spectrum of differences (AACU)*

*Adapted from the Association of American Colleges and Universities

Study Away Structure

Pre-immersion. The pre-immersion experiences will be connected to the following course: *PHAR 6324: Culture, Literacy, and Community Health*. This experience will provide students a general overview of what to expect and what to strive for during their study away experience. Students will integrate and expand on concepts introduced in the Global Health Colloquium Track. Students will be provided general information regarding study away experiences, the value of understanding how different communities behave and are constructed, and will discuss general inequity issues. Students will be required to investigate their site location regarding the following topics using a community competency model* that focuses on culture, history, geography, and context (health disparities). Further, students may explore cultural groups, language, money, forms of government, cultural sites, and other related issues.

*Robinson R. Community Development Model for Public Health Applications: Overview of a Model to Eliminate Population Disparities. *Health Promotion Practice*. 2005; 6(3): 338-346.

Study away experience. The study away experience is where we expect meaningful learning to occur via immersion in another community. Students who dive into the new host community by studying, observing, interacting, reflecting, and integrating with the people, rich history, context, and culture of the communities will gain the most from these experiences. All study away experiences are short-term (1 week to 6 weeks) and are to be completed prior to the second academic year of the PharmD curriculum.

- P1 Wintermester
- P1 Spring Break
- P2 Summer
- P2 Wintermester (for remediation or make-up purposes only)

At least 25% of time (minimum 10 hrs based on a 40 hr wk): Students will be required to attend their community organization/service site regularly and meet the requirements of their organization. **(Note: in 2022, this time allotment may be adjusted by interacting in/with service agencies)**

Students are required to integrate into the community by participating in civic and/or community engagement as outlined by specific activities developed by the faculty lead. The community competency model provides a framework for learning (e.g., culture, context, history, geography).

Students will be participating in additional reflection/group activities as determined by the faculty lead. A calendar of experiences and assignments will be provided for each Study Away section to meet the objectives prior to leaving on the Study Away experience. There may need to be adaptations to the schedule based on unforeseen circumstances at the Study Away location. Students should be flexible and open-minded to these changes. If any changes in the Study Away calendar are made after the start of the experience, the faculty lead will notify students as quickly as possible.

Post-immersion. Post-immersion experiences will be connected to the following course(s): *PHAR 6223 Behaviours and Perceptions of Health Across Cultures and the Lifespan*. Students will discuss specific (rather than general) inequity issues found at their site/location. They will discuss and reflect on local (site) issues in relation to health disparities or inequities.

Detailed Course Meetings & Location

Study Away Site Assignment (see attachments in Blackboard® for Study Away)

Contingency Plan: Please refer to Office of Experiential Education handbook.

Online Platforms:

Blackboard: Accessing Course Content on Blackboard: Lectures, handouts, and course material will be located in Blackboard, unless otherwise noted by the course instructor (i.e., faculty lead). Log into My UTEP.edu and click on the Blackboard link to access the online course for your course number. The course is individualized and students may access lectures/handouts/assignments as they are made available by course instructors. Except in cases of a UTEP network being “down” or “offline” you are ultimately responsible to ensure that your computer is connected to the internet and that any issues are addressed prior to class and/or assessments.

Core ELMS: Study Away requires the use of Core ELMS®. Students are responsible for ensuring that they have access to the Study Away section in Core ELMS® (MyCred®) within the first week of class. If you cannot access your account, please contact the Office of Experiential Education to resolve this issue.

Each Study Away experience is unique and students will be informed of where important materials will be made available by their specific faculty lead. Except in cases of a UTEP network being “down” or “offline” you are ultimately responsible to ensure that your computer is connected to the internet and that any issues are addressed prior to class and/or assessments.

Study Away Objectives Aligned with Pharmacy and UTEP Edge Outcomes

Study Away Objectives	CAPE Outcomes	PCOA	UTEP Edge Outcomes
Identify social determinants of health and their influences on health and well being	<p>3.1 Problem-solving (problem solver) Identify problems; explore and prioritize potential strategies; and design, implement, and evaluate a viable solution.</p> <p>3.5 Cultural sensitivity (Includer)</p>	3.1, 3.3, 3.9, 4.5, 4.7	Problem-solving Critical thinking Global awareness
Seek to understand how their actions affect both local and global communities (AACU)	<p>Recognize social determinants of health to diminish disparities and inequities in access to quality care.</p> <p>4.1 Self-awareness (Self-aware) Examine and reflect on personal knowledge, skills, abilities, beliefs, biases, motivation, and emotions that could enhance or limit personal and professional growth.</p>	3.1, 3.3, 3.7, 4.5	Problem-solving Critical thinking
Become informed, open-minded, and responsible people who are attentive to diversity across the spectrum of differences (AACU)	<p>3.5 Cultural sensitivity (Includer) Recognize social determinants of health to diminish disparities and inequities in access to quality care.</p> <p>4.1 Self-awareness (Self-aware) Examine and reflect on personal knowledge, skills, abilities, beliefs, biases, motivation, and emotions that could enhance or limit personal and professional growth.</p>	3.1, 3.7, 3.9, 4.7	Problem-solving Critical thinking Global awareness Social responsibility

Expectations of Students During Study Away

Students are expected to be engaged and active participants throughout the study away experience (including pre-immersion, study away, and post-immersion activities). Students who are completing study away experiences should be mindful that they are still representing the UTEP School of Pharmacy and will be expected to display professionalism at all times. **It is expected that students will be on time to all scheduled sessions, meetings, or other planned activities. It is the student's responsibility to notify the site contact and the faculty lead in the event of tardiness or absence.** In the event that a student plans to be away from the primary location site for any period of time (e.g., planning to travel away from site for the weekend), the faculty lead must be notified in advance and student must be aware that this travel cannot affect required learning experiences and is outside of the course structure and UTEP responsibility (see signed Indemnification Form). **Students may be asked to make up missed hours at a 1:3 ratio (for every 1 hour missed, 3 hours of make-up work during Study Away experience or afterward).** As students participate in study away, remember to be respectful of different cultures, be willing to learn, and enjoy the experience. **During any/all virtual meetings, students are expected to share video camera and audio to avoid any course grading penalties.**

NOTE: Prior to participating in a study away experience, please inform the Study Away coordinator and faculty lead of food allergies or other accommodations that need to be made.

Methods of Instruction/Learning

The learning outcomes in this Study Away will be achieved via:

1. **Outside Preparation**
2. **Community-based learning (e.g., service, field trips)**
3. **Team Assignments/Activities**
4. **Reflections**
5. **Online and in-person meetings**

Required Study Away Technology/Tools/Needs

Required Textbooks/Readings:

- Readings will be assigned as appropriate to each experience

Laptop Computer

- Students are expected to have laptop computers for participation in on-line exercises or assessments. It is the responsibility of the students to make sure that the laptops are in working condition and meets the University and School of Pharmacy IT requirements. (See SOP Student Handbook)

Evaluation and Grading Policy

The following activities must be completed in **all** study away experiences:

Type of Assessment	% Study Away Grade	Due Date (see UNIQUE Study Away Due Dates below)	Reflections (Length)
Background/Readings <i>(e.g., website exploration, articles)</i>	10%	As indicated by the faculty lead	n/a
Purpose/Pre-Reflections	10%	Prior to first day of experience (by the night prior to departure)	Reflections should be 300-500 words per reflection assignment (NOT per question)
Approach/Assignments <i>(e.g., reflection questions, journaling, service, other assignments done during the experience)</i>	50%	Will be due during the experience as indicated by the faculty lead	
Results/Post-Reflections	10%	No later than 1 week after returning from Study Away	
Participation/Professionalism <i>(e.g., student is punctual, participates in discussion)</i>	20%		n/a

West Texas STUDY AWAY: NOTE: assignments may be modified slightly to accommodate service site and experiential components of the experience. See attached documents with activities and due dates. Each activity/assignment will be graded out of 100%. ALL assignments must be completed to pass. Assessments will be administered via Blackboard® or MyCred (CORE ELMS®), unless noted otherwise. **Students must receive a total of >= 70% (for total Study Away grade) in order to receive a passing grade in this course. Assignment of final grades: Pass/Fail**

Type of Assessment	% Study Away Grade	Points
Background/Readings <i>(e.g., website exploration, articles)</i>	10%	<p>10 points</p> <ul style="list-style-type: none"> Discuss pre-trip Alpine readings, videos (daily starting Day 1) See Blackboard - Complete and upload ALPINE-PRESIDIO Community Competency activity including video links, El Paso News, and places to go in Alpine due 6 pm, Mon, June 6, 2022
Purpose/Pre-Reflections	10%	<p>10 points</p> <ul style="list-style-type: none"> Pre-Reflection due 6 pm, Mon, June 6, 2022 (rubric w/ assignment) - Use Census Data provided for West Texas and Calendar as a guide
Approach/Assignments <i>(e.g., reflection questions, journaling, service, other assignments done during the experience)</i>	50%	<p>10 points</p> <ul style="list-style-type: none"> Mid-Reflection due 6 pm, Wed, June 8 2022 (rubric w/ assignment) <p>30 points</p> <ul style="list-style-type: none"> 10 Artifacts/Photos (2 pts each—all must be submitted—rubric w/ assignment) Scavenger Hunt (individual submission, but may work on as a group) – 10 pts) <p>10 points</p> <ul style="list-style-type: none"> Submit (1 POWERPOINT SLIDE) summary of MOST influential part of trip. Include: Your Name, Element of Cultural Competency, Photo and WHY influential.
Results/Post-Reflections	10%	<p>10 points</p> <ul style="list-style-type: none"> Post-Reflection posted by 11:59 pm, Sun, June 12, 2022 (rubric w/ assignment) in Blackboard® AND CoreELMS®/CompMs®
Participation / Professionalism <i>(e.g., student is punctual, participates in discussion)</i>	20%	<p>10 points</p> <ul style="list-style-type: none"> Active engagement, punctuality, as a group and professionalism at all service sites and all excursions (points may not be posted until end. Deductions may be posted daily (1-2 points per day) <p>10 points</p> <ul style="list-style-type: none"> Active preparation, engagement AND contribution in all group discussions & debriefing sessions Continued participation in readings, videos, etc throughout week

It is the responsibility of the **student** to monitor their own progress during Study Away and see that they are maintaining the required competency level. Students should seek advice and assistance from the Study Away faculty lead as soon as any difficulties pertaining to Study Away are encountered. **Late assignments may receive 10% deduction for each day (unless discussed with/approved by instructor).** If changes in assignment due date occur, the instructor will work with students to inform them of these changes via a common communication channel (e.g., TEAMS or text)

West Texas Study Away Engagement, Communication, and Transportation:

- It is expected that students will engage / immerse themselves fully in the experience to gain the benefits of the learning opportunity while taking appropriate safety measures. **Students may be asked to make up missed hours at a 1:3 ratio (for every 1 hour missed, 3 hours of make-up work during Study Away experience or afterward).**
- The faculty will provide **cell phone information for easy access and emergency** and will also need to be able to reach each student enrolled quickly (cell phone access preferred). It is essential that students can be reached during scheduled “class” time (**see calendar which will be updated** as needed during the event and posted in Blackboard®).
- One aspect of immersion is **walking and using group (van) transportation** in the West Texas area during “class” hours. Students should plan their schedules accordingly to arrive meeting points with adequate time to get to destination. Conversely, use of private vehicle (e.g., uber, lyft, taxi) is not accepted as “full participation” during “class” hours unless deemed an emergency by faculty.

Reflections: Reflection activities will allow students to demonstrate that they have integrated concepts outlined in the Study Away objectives and allows instructors to provide necessary feedback.

Other Assignments: Presentations, written assignments, or other graded assignments may be assigned by the faculty lead.

Missed Quizzes / Exams / Assignments Policy

Only students who miss an exam, quiz or an assignment due date as a result of an **excused absence** will be allowed to make-up the missed assignment or assessment. Students should consult the UTEP School of Pharmacy Student Handbook for definitions and examples of excused absences.

Remediation Policies:

Please refer to the Student Handbook for end-of-course remediation policies and timelines (*see Table of Contents for End of Course Remediation*).

Technical Assistance

Checking computer requirements and ensuring that all software up to date is essential for students to access course content. **Supported browsers include** – 1) For a PC: FireFox, Internet Explorer (Do NOT use IE7), and Chrome, 2) For a Mac: Safari, Firefox, and Chrome. To enhance browser performance, students should clear the browser cache and allow pop-ups. In addition to testing the web browser, check to ensure that the computer has an updated version of Java (go to <http://java.com>, click on “Do I have Java”, click on “Verify Java Version,” update Java if needed). Additional browser plug-ins may also be needed to view some content that your instructor may share on the learning management system. Common plug-ins include: Adobe Reader, Flash Player, Windows Media Player, QuickTime. When creating documents, slide presentations, spreadsheets, etc., be sure to use Microsoft Office or a compatible program (see 10 Free MS Word Alternatives). The UTEP Technology Support Services (3rd floor, UTEP Library) can also provide students with any applications, compatibility packs, patches, and updates that may be needed.

Students working off campus may need to set up a Virtual Private Network (VPN) on their computer to access UTEP resources for this class (i.e. Library). The link below provides information in setting up a VPN connection depending on the operating system. Students may contact the Help Desk for assistance (See Technical Assistance information). <http://admin.utep.edu/Default.aspx?tabid=58534>

If technical problems are experienced with the course, students should contact the UTEP Helpdesk during: Monday– Friday: 8AM – 5PM. If calling within UTEP: 915.747.4357. If calling from outside UTEP: 915.747.5257. For more information, please visit <http://helpdesk.utep.edu>. For help with Blackboard: <http://admin.utep.edu/Default.aspx?tabid=74094>

In order for UTEP to provide a stable learning environment, Thursdays from 12:00-6:00am MST are reserved for minor preventive maintenance. This maintenance window is scheduled during the lowest usage time for the system. Blackboard may or may not be available during this time, depending on whether maintenance is necessary. Whenever possible, this time will be utilized to perform all minor maintenance. Unscheduled outages occur rarely, but they do happen. In the event of an unscheduled outage, Technology Support Services will confer with appropriate student and faculty networks to provide appropriate notifications to those affected.

Students can also visit an on-campus lab such as the ATLAS lab located within the Undergraduate Learning Center (UGLC building) for additional technical assistance. In addition to the various campus computer labs (ATLAS in UGLC or LACIT in Liberal Arts for example), Technology Support Services provides workstations for student use. To learn more, please visit <http://admin.utep.edu/Default.aspx?tabid=74174>.

Attendance and Field Experience Behavior

The attendance policy for the School of Pharmacy is outlined in the Student Handbook. It is expected that students should demonstrate their commitment to the profession and respect for faculty, guest speakers, colleagues, and their respective study away sites by attending all meetings and arriving on time and fully prepared. Upon committing to an experience,

student attendance and full participation is expected as outlined in each specific study away experience. If a student has an excused absence, they should immediately notify the faculty lead.

COVID-19

This course will observe appropriate CURRENT public health precautions/measures. For up-to-date UTEP policies, please see: <https://www.utep.edu/resuming-campus-operations/?home>

Unique Dress Policy for Study Away: Each Study Away experience is unique and may require its own unique dress code. Students are responsible for checking in with their respective faculty leads regarding any specific or unique dress requirements for your Study Away and/or activities within your Study Away experience.

West Texas STUDY AWAY: Comfortable casual attire will be expected (e.g., polos/UTEP shirts and khakis) for interacting at service sites and at excursions to visit organizations. Shorts/Jeans and tennis shoes may be appropriate depending on the site visited and work.

UTEP and SOP Policy for Academic Integrity

Any student who commits an act of academic dishonesty is subject to discipline. The instructor is required to report all suspected academic dishonesty to the UTEP Office of Student Conduct and Conflict Resolution. Please refer to the Student Handbook for SOP guidance on academic integrity (*see Table of Contents for Curriculum and Classroom Policies: Academic Integrity*).

Academic dishonesty includes, but is not limited to, cheating, plagiarism, collusion, the submission for credit of any work or materials that are attributable in whole or in part to another person, taking an examination for another person, and any act designed to give unfair advantage to a student or the attempt to commit such acts.

Proven violations of the detailed regulations, as printed in the Handbook of Operating Procedures (HOP), and available in the Office of the Dean of Students and on the homepage of the Dean of Students at www.utep.edu/dos, may result in sanctions ranging from disciplinary probation, to a failing grade on the work in question, to a failing grade in the course, to suspension or dismissal, among others. (For more information, see: <https://www.utep.edu/student-affairs/osccr/>).

Professionalism and Professional Conduct

While enrolled at the University, a student neither loses the rights nor escapes the responsibilities of citizenship. Thus, UTEP and the SOP value professionalism and expect all students to not only acquire but also maintain the highest standards of professional attitudes and behaviors in their interactions with their fellow classmates, staff, faculty, colleagues and their patients, as described in the Student Handbook and as per UTEP's student conduct policies (see <http://sa.utep.edu/osccr/student-conduct/> & <http://admin.utep.edu/Default.aspx?tabid=73922> for further information). Any student who engages in conduct that is prohibited by the Board of Regents' Rules and Regulations, University or SOP rules or by federal, state, or local law is subject to discipline whether such conduct takes place on or off campus or whether civil or criminal penalties are also imposed for such conduct. Please refer to the Student Handbook for specific expectations regarding professional conduct in the SOP (*see Table of Contents for Academic Progression: Good Standing: Professional*).

UTEP and SOP Policy for Special Accommodations (ADA)

"If you have or suspect a disability and need classroom accommodations, you should contact the Center for Accommodations and Support Services (CASS) at 747-5148." You can also e-mail the office at cass@utep.edu or go by their office in Union Building East (Room 106). For additional information, visit the CASS website at <http://sa.utep.edu/cass/>

General Statement About Study Away Policy

The syllabus CALENDAR is subject to change to meet Study Away needs, especially if there are unexpected disruptions or changes in class size, resources, etc. The most updated syllabus can be found on the Blackboard course shell. It is your responsibility to review the syllabus periodically for updates.

Additional Information

Campus Concealed Carry:

Effective August 1, 2016.

<http://sa.utep.edu/campuscarry/>

Civility Statement:

You are expected to follow basic standards of courtesy (<http://admin.utep.edu/Default.aspx?tabid=73922>) and may be dismissed from class for blatant or sustained disruptive behavior

Cell Phone Policy (Optional for Faculty to adapt or not)

Students should carry cell phones, but keep the phone on the vibrate mode in the event students need to be notified by the emergency alert system. Cell phone use for the purpose of texting, email or social media is not permitted. This is disruptive to fellow classmates, faculty and the learning environment. The use of a cell phone or the ringing of the phone in class is considered unprofessional behavior. No cellphones, calculators, laptops or other items may be used during an assessment (e.g., exam or a quiz) unless specifically as part of that assessment and approved by the faculty member/instructor.

Student Support:

UTEP provides a variety of resources for those in need (e.g., if you feel overwhelmed, stressed or dealing with a crisis):

- UTEP's Counseling Center (free counseling to all students): 747-5302, which after-hours goes to a crisis line
- Mental Health Crisis Line: 779-1800
- National Suicide Prevention Hotline: 1-800-273-8255
- Veterans Crisis Line: 1-800-273-8255
- NAMI (National Alliance Against Mental Illness) of El Paso: 534-5478
- <http://caringeducators.tumblr.com/survival>

Title IX:

Title IX of the Education Amendments of 1972 (Title IX), prohibit discrimination on the basis of sex in education programs or activities operated by recipients of Federal financial assistance. Sexual harassment of students, which includes acts of sexual violence, is a form of sex discrimination prohibited by Title IX. Sexual violence refers to physical sexual acts perpetrated against a person's will or where a person is incapable of giving consent due to the victim's use of drugs or alcohol. An individual also may be unable to give consent due to an intellectual or other disability. A number of different acts fall into the category of sexual violence, including rape, sexual assault, sexual battery, sexual coercion, stalking, and relationship violence. All such acts of sexual violence are forms of sexual harassment covered under Title IX.

In accordance with Title IX of the Education Amendments of 1972, UTEP does not discriminate on the basis of sex in the operation of its educational programs and activities. This commitment to non-discrimination applies to both employment in and admission to such programs and activities. [Link to full text at <http://admin.utep.edu/Default.aspx?tabid=68750>]