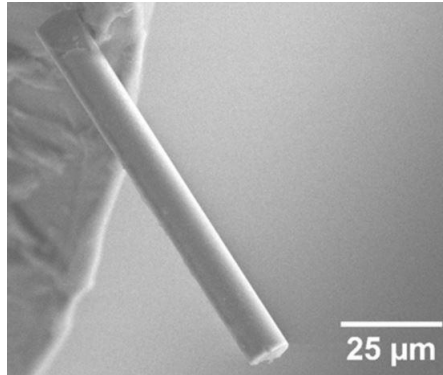


# MASE 6294/MME 5294 Electron Microscopy Applications

## Fall 2023

Course	CRN
MASE 6294	15713
MME 5294	15712



**Instructor: David A. Roberson, Ph.D., [droberson@utep.edu](mailto:droberson@utep.edu)**

**Office Hours: Thursday 12:00-2:00 PM Metallurgy M201-L**  
(Appointments can also be made to meet either in-person or virtually)

**T.A.: Dominic Dieguez: [dgdieiguez@miners.utep.edu](mailto:dgdieiguez@miners.utep.edu)**

### **COURSE DESCRIPTION**

An exciting opportunity for hands on experience on three scanning electron microscopes and a transmission electron microscope. Multiple electron microscopy techniques will be covered including low, voltage electron microscopy, orientation imaging microscopy and elemental contrast microscopy. Specimen preparation techniques will also be covered. This course is heavy on the lab time and intended to develop hands on skills that will allow the student to perform high quality microscopy on a variety of specimen types.

### **COURSE OBJECTIVES OR EXPECTED LEARNING OUTCOMES**

After completing this course, students will be able to:

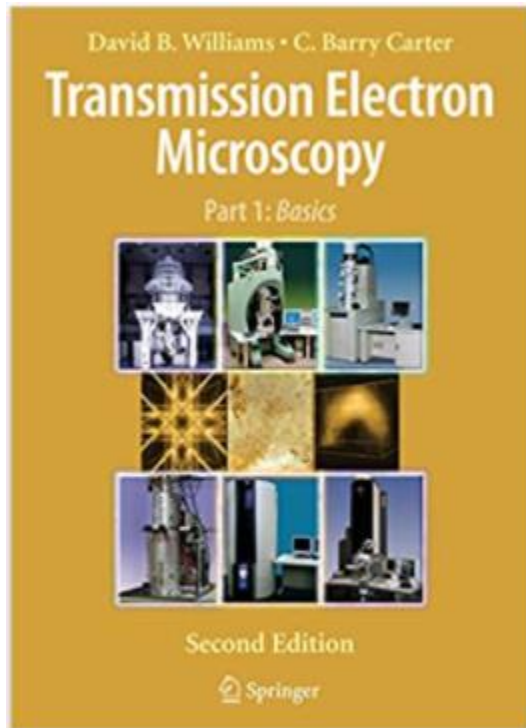
- Understand concepts of electron optics
- Explain the differences between different types of electron guns and the influence on image quality.
- Articulate the differences in generated information based on electron detector type.
- Perform specimen preparation for electron microscopy characterization of different sample types
- Apply the concepts of backscatter and secondary electron generation towards the interpretation of electron micrographs
- Interpret contrast mechanisms in TEM micrographs

**Textbook:**

There are two resources posted on Blackboard that are supplied by Hitachi

Other recommended Texts:

Williams and Carter's book on transmission electron microscopy. It is a 4 volume set



ISBN-13: 978-0387765020

ISBN-10: 0387765026

Available on [Amazon](#)

You will also need regular access to a computer, stable, consistent internet, Blackboard, a UTEP VPN connection and your UTEP email account.

Several articles will also be used in this class. They should be accessible through UTEP VPN.

### **COURSE CONTENT DELIVERY**

The course is mainly intended to be hands on, but there will be a one-hour lecture once per week.

### **COURSE ASSIGNMENTS AND GRADING**

Some Assignments for this course are assessed according to a designated Grading Rubric with crucial information that could affect your grade for each activity. This is most pertinent for lab

reports and/or project presentations. A rubric will be included on the assignment. Other assignments including derivations and mathematical calculations will also be included in this course. Grading is based on how much work is shown as well as an explanation as to how you reached your conclusion if applicable.

#### **Grade Distribution:**

**100-90 = A      89-80 = B      79-70 = C      69-60 = D      59 and Below = F**

- **Lab Reports** **60%**
- **Quizzes/TESTS** **20%**
- **Final Project/Final Exam** **20%**

#### **LAB COMPONENT**

Labs will be given in person. Lab groups will be constructed at random. Please use applicable PPE. A lab report will be due, generally one week after the lab activity is performed.

**If we are forced to return to online learning due to COVID**, the lab component will be satisfied by virtual laboratory modules. The Laboratory modules will be conducted virtually. Assigned lab groups will collaborate virtually.

#### **COURSE CALENDAR**

A detailed calendar for this course is provided as a separate document on Blackboard titled **“Course Calendar.”**

#### **ATTENDANCE POLICY**

Attendance is not taken, but there are several in-person assignments and activities. If you cannot attend class on a given day, please do your best to let me know prior to missing class.

#### **TECHNOLOGY REQUIREMENTS**

Some content for this course is delivered via the Internet through the Blackboard learning management system (LMS). Ensure your UTEP e-mail account is working and that you have access to the Web and a stable web browser. Mozilla Firefox and Google Chrome are the most supported browsers for Blackboard; other browsers may cause complications with the LMS. When having technical difficulties, update your browser, clear your cache, or try switching to another browser.

You will need to have or have access to a computer/laptop. You will need to download or update the following software: Microsoft Office, Adobe, Flashplayer, Windows Media Player, QuickTime, and Java. Check that your computer hardware and software are up-to-date and able to access all parts of the course.

If you encounter technical difficulties beyond your scope of troubleshooting, please contact the [Help Desk](#) as they are trained specifically in assisting with technological needs of students.

## **LATE WORK POLICY**

Please do your best to complete assignments by the due date assigned. If you will miss an assignment because you are ill or have some sort of emergency, please let me know and we can work something out.

## **DROP POLICY**

In order to drop this class, please contact the [Registrar's Office](#) to initiate the drop process. If you cannot complete this course for whatever reason, please contact me. If you do not, you are at risk of receiving an "F" for the course. **The drop deadline for the Fall 2023 semester is November 3rd.**

Other important dates can be found by clicking [HERE](#)

## **ACCOMMODATIONS POLICY**

The University is committed to providing reasonable accommodations and auxiliary services to students, staff, faculty, job applicants, applicants for admissions, and other beneficiaries of University programs, services and activities with documented disabilities in order to provide them with equal opportunities to participate in programs, services, and activities in compliance with sections 503 and 504 of the Rehabilitation Act of 1973, as amended, and the Americans with Disabilities Act (ADA) of 1990 and the Americans with Disabilities Act Amendments Act (ADAAA) of 2008. Reasonable accommodations will be made unless it is determined that doing so would cause undue hardship on the University. Students requesting an accommodation based on a disability must register with the [UTEP Center for Accommodations and Support Services](#).

## **SCHOLASTIC INTEGRITY**

### ***Cheating, Plagiarism, Scholastic Dishonesty, and Student Discipline***

Students who engage in scholastic dishonesty will be subject to disciplinary action as stated in the UTEP-HoOP:

"Scholastic dishonesty (which includes the attempt of any student to present the work of another as his or her own, or any work which s(he) has not honestly performed, or attempting to pass any examination by improper means) is a serious offense and will subject the student to disciplinary action. The aiding and abetting of a student in any dishonesty is held to be an equally serious offense. All alleged acts of scholastic dishonesty should be reported to the Dean of Students for disposition. It is the Dean of Students' responsibility to investigate each allegation, dismiss the allegation, or proceed with disciplinary action in a manner which provides the accused student his or her rights of due process."

Any act of academic dishonesty attempted by a UTEP student is unacceptable and will not be tolerated. All suspected violations of academic integrity at The University of Texas at El Paso must be reported to the [Office of Student Conduct and Conflict Resolution \(OSCCR\)](#) for possible disciplinary action. To learn more [HOOP: Student Conduct and Discipline](#).

## STUDENT RESOURCES

UTEP provides a variety of student services and support:

- [UTEP Library](#): Access a wide range of resources including online, full-text access to thousands of journals and eBooks plus reference service and librarian assistance for enrolled students.
- [Help Desk](#): Students experiencing technological challenges (email, Blackboard, software, etc.) can submit a ticket to the UTEP Helpdesk for assistance. Contact the Helpdesk via phone, email, chat, website, or in person if on campus.
- [University Writing Center \(UWC\)](#): Submit papers here for assistance with writing style and formatting, ask a tutor for help and explore other writing resources.
- [Math Tutoring Center \(MaRCS\)](#): Ask a tutor for help and explore other available math resources.
- [History Tutoring Center \(HTC\)](#): Receive assistance with writing history papers, get help from a tutor and explore other history resources.
- [Military Student Success Center](#): UTEP welcomes military-affiliated students to its degree programs, and the Military Student Success Center and its dedicated staff (many of whom are veterans and students themselves) are here to help personnel in any branch of service to reach their educational goals.
- [RefWorks](#): A bibliographic citation tool; check out the RefWorks tutorial and Fact Sheet and Quick-Start Guide.