



The University of Texas at El Paso
DRSC 3401 Human Gross Anatomy
Fall 2025

Instructor: Daniel Conde Ph.D.
Email: daconde@utep.edu
Office Hours: CHSN 419 – by appointment

Course Description:

The Human Gross Anatomy course offers students a dynamic and immersive learning experience, combining in-depth lectures with hands-on exploration of dissected human cadavers and 3D anatomical models to build a strong foundation in human anatomy.

Course Time:

Lectures: Mondays and Wednesdays, 9:00 am to 9:50 am.
Lab: Friday 9:00 am - 10:50 am or 11:00 am - 12:50 pm.

Course Location:

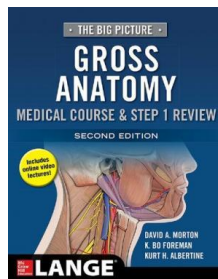
Lecture: UGLC 336
Lab: CABL B-01

Course Purpose:

Develop a clear understanding of the main anatomical structures of the human body and explore how they connect and interact with one another.

Required Materials:

- Morton, D. A., Foreman, K. B., & Albertine, K. H. (2011). [*The Big Picture: Gross Anatomy*](#). New York: McGraw-Hill.



Suggested Materials:

- Netter, F. H. (2019). *Atlas of Human Anatomy (7th edition)*. Philadelphia, PA: Saunders/Elsevier.
[Online Book](#)
- Anatomy TV [Online Access](#)

Other Materials:

The following materials will be available on Blackboard.

- Syllabus and Tentative Schedule – Contain details and dates for assignments, quizzes, and tests.
- Lectures – Cover the main points from each chapter.
- Quizzes – Weekly quizzes will be accessed using Respondus LockDown browser.
- Exams – All the exams require the use of the Respondus LockDown browser.
- Grades – Assignments, quizzes, and exam grades are available on Blackboard.

Course Content Overview:

1. Joints
2. Pectoral Region
3. Arm, Forearm, and Hands
4. Axilla, Shoulder, Back, and Spinal Cord
5. Abdominal Wall and Viscera
6. Thoracic Wall and Mediastinum
7. Thoracic Viscera
8. Pelvis
9. Hip, Thigh, and Gluteal Region
10. Perineum and Urogenital Region
11. Face and Neck
12. Skull and Brain

Course Objectives and Student Outcomes:

The student will demonstrate the following through quizzes and tests.

- Knowledge of the bones of the human body and the major landmarks.
- Knowledge of the main muscles of the human body.
- Knowledge of the main neurovascular structures of the human body.
- Knowledge of the viscera and their relationship as organ systems.

Course Requirements and Determination of Grades:**Exams**

- There will be a total of four (4) exams, three (3) exams during the semester, and one (1) final exam. Each exam is worth 100 points.
 - The exams will include information from PowerPoint presentations, including the identification of anatomical structures.
- The exam format will consist of some or all of the following:
 - Multiple choice
 - True or false
 - Matching
- All exams must be accessed using Respondus Lockdown Browser. Below are the instructions for downloading the required software.

- [Respondus Lockdown Browser Download](#)
- You **MUST BRING A LAPTOP** to class with Lockdown Browser installed on the exam day.
 - If you do not have a laptop, you can reserve one in the library, room 300.
- The tentative schedule highlights all the exam dates.
 - Changes in exam dates will be announced in class.
- There are no makeup exams.
- The final exam **IS NOT** cumulative.
- The exams cover the material from the lectures, **NOT THE LAB**.

Exam points

Exam 1	100 points
Exam 2	100 points
Exam 3	100 points
Exam 4 (Final)	100 points

Quizzes

- There will be 10 quizzes worth 10 points each.
- The "Tentative Course Schedule" includes the quiz dates.
- The quizzes include information from the chapter(s) covered during the week.
- The quiz format will consist of some or all of the following:
 - Multiple choice.
 - True or false.
- There are no makeup quizzes.
- All quizzes must be accessed using Respondus Lockdown Browser. Below are the instructions for downloading the required software.
 - [Respondus Lockdown Browser Download](#)
- Quizzes will open toward the end of the class (9:40 am) and close at the end of the class (9:50 am).
- The tentative schedule highlights all the quiz dates.
 - Changes in quiz dates will be announced in class.

Grade Determination:

Points		Grade
Exams	400	A = 450 – 500
<u>Quizzes</u>	<u>100</u>	B = 400 – 449
Total	500	C = 350 – 399
		F = ≤ 349

Course Policy and Instructional Modifications:

Attendance

Class attendance is not part of the course grade. However, you must attend class to get all the information not included in the PowerPoints, changes in class schedule (if any), or any other information about the course.

Makeup Exams, Quizzes, or Assignments

You will not be allowed to complete a missed quiz or exam for any reason other than an emergency or a University-sanctioned event. Emergencies will require written verification (e.g., doctor notes, etc.) and will be handled on a case-by-case basis.

Extra Credit:

There are no extra credit assignments. You know what is expected ahead of time. Everything is listed in the syllabus. I will not favor any student over another and will not provide any single student additional privileges over others.

If extra credit question(s) are provided on a quiz or exam, everyone will have the opportunity to attempt the same question(s). Understand that extra credit does not mean free points. These questions will probably be the most difficult to answer if they are available.

Withdrawals:

The final date to withdraw from a course with a **"W" is October 31st**.

The student is responsible for initiating official withdrawal from a course and obtaining all necessary signatures on the drop/add form. Dropping from the class is not automatic, even if you do not attend class or complete the quizzes/exams on Blackboard. In this situation, you will be assigned an "F" at the end of the term if you are still registered.

Access to PDF Files

You will need [Adobe Acrobat Reader](#) or similar software to access the PDF files containing the class presentations.

Cheating:

There is no tolerance for cheating. It is your education; indeed, the only one who suffers when you cheat is yourself. Don't risk your college education or reputation by cheating. The instructor and corresponding University authorities will follow the case according to the UTEP policies and procedures if you cheat.

University Statement on Academic Integrity:

The University of Texas at El Paso prides itself on its standards of academic excellence. In all matters of intellectual pursuit, UTEP faculty and students must strive to achieve excellence based on the quality of work produced by the individual. In the classroom and in all other academic activities, students are expected to uphold the highest standards of academic integrity. Any form of scholastic dishonesty is an affront to the pursuit of knowledge and jeopardizes the quality of the degree awarded to all graduates of UTEP. It is imperative, there, that the members of this academic community understand the regulations pertaining to academic integrity and that all faculty insist on adherence to these standards.

Any student who commits an act of scholastic dishonesty is subject to discipline. Scholastic dishonest includes but is not limited to cheating, plagiarism, collusion, the submission for credit of any work or materials that are attributable in whole or in part to another person, taking an examination for another person, and any act designated to give an unfair advantage to a student or the attempt to commit such acts. Proven violations of the detailed regulations, as printed in the 3.

Handbook of Operating Procedures (HoOP), available in the Office of the Dean of Students and on the homepage of the Dean of Students at www.utep.edu, may result in sanctions ranging from disciplinary probation to failing a grade on the work in question to failing grade in the course, to suspension or dismissal, among others.

Course Statements:

ADA: If you have or suspect a disability and need accommodation, contact the Center for Accommodations and Support Services (CASS) at 747-5148. You can also email the office at cass@utep.edu or go to Room 106, Union Building East. For additional information, visit the DSSO website at [CASS](#).

Laboratory Observations Rules and Regulations

- These cadavers were obtained for anatomical study. These cadavers were unselfish and concerned individuals who had the foresight to contribute to the education of students. ***The anatomical specimens studied must always be handled with respect and dignity.***
- Dr. Conde will use cameras in the lab. Otherwise, no cameras, pictures, or video of the cadavers are allowed, including on camera phones.
- No cadaver tissue is to be taken outside of the laboratory at any time.
- Eating or drinking is not permitted in the laboratory.
- If there is a suspicion that a donor may be a relative or acquaintance of a student, the student should contact Dr. Conde.
- Garments worn in the laboratory must include **long pants**. Shoes worn in the lab must adequately protect the top of the foot and be **closed at the toes**. All persons handling cadavers are required to wear gloves, masks, and protective eyewear.
- No radios, MP3 players, or electronic devices (including cell phones) are allowed in the lab at any time.
- Any injuries incurred in the laboratory should be reported immediately to Dr. Conde. To ensure a proper record of these events, an incident and injury form must be completed at the time of injury.
 - Minor cuts and abrasions from cutting instruments or bone edges should be washed thoroughly with antibacterial soap and hot water. An antiseptic spray must be used to clean the wound found in the FIRST-AID cabinet).
 - In a severe emergency, call 911 (serious wounds should be treated by a physician immediately).
- Only students enrolled in this class are allowed in the cadaver lab.

University Resources:

UTEP provides the students with a variety of services and support:

Technology Resources

- **Help Desk:** Students experiencing technological challenges (email, Blackboard, software, etc.) can submit a ticket to the UTEP Helpdesk for assistance. Contact the Helpdesk via phone, email, chat, website, or in person if on campus.

Academic Resources

- **Library:** Access a wide range of resources, including online, full-text access to thousands of journals and eBooks, reference service, and librarian assistance for enrolled students.

- [University Writing Center](#): Submit papers here for assistance with writing style and formatting, ask a tutor for help, and explore other writing resources.
- [Math Tutoring Center](#): Ask a tutor for help and explore other available math resources.
- [History Tutoring Center](#): Receive assistance with writing history papers, get help from a tutor, and explore other history resources.
- [RefWorks](#): A bibliographic citation tool; check out the RefWorks tutorial, Fact Sheet, and Quick-Start Guide.

Individual Resources

- [Military Student Success Center](#): Assists personnel in any branch of service to reach their educational goals.
- [Center for Accommodations and Support Services](#): Assists students with ADA-related accommodations for coursework, housing, and internships.
- [Counseling and Psychological Services](#): Provides various counseling services, including individual, couples, and group sessions and career and disability assessments.

Tentative Schedule

Date	Lecture Topic	Quiz Due
August 25	Introduction to Class, Syllabus, and Grades	N/A
August 27	Orientation and Organization	N/A
September 1	Labor Day – No Class	
September 3	Joints and Pectoral Region	N/A
September 8	Shoulders and Arms	Quiz 1
September 10	Forearm Flexors and Extensors	N/A
September 15	Hand and Upper Limb Neurovascular Structures	Quiz 2
September 17	Back	N/A
September 22	Upper Body and Back Review	Quiz 3
September 24	Exam 1	
September 29	Abdominal Wall	N/A
October 1	Abdominal Viscera	Quiz 4
October 6	Thoracic Wall and Mediastinum	N/A
October 8	Thoracic Viscera	Quiz 5
October 13	Abdomen and Thorax Review	N/A
October 15	Exam 2	
October 20	Pelvis and Pelvic Viscera	N/A
October 22	Anterior/Medial Hip and Thigh	Quiz 6
October 27	Gluteal Region and Posterior Thigh	N/A
October 29	Leg and Ankle	Quiz 7
October 31	Fall Drop/Withdrawal Deadline	
November 3	Foot and Lower Extremity Joints	N/A
November 5	Perineum and Urogenital Region	Quiz 8
November 10	Lower Extremity Review	N/A
November 12	Exam 3	
November 17	Face and Neck	N/A
November 19	Deep Face and Orbit	N/A
November 24	Temporomandibular Joint and Ear	Quiz 9
November 26	Skull and Cranial Nerves	N/A
November 27 - 28	Thanksgiving – No Class	
December 1	Brain	N/A
December 3	Head and Neck Review	Quiz 10
December 8 – 12	Final Exam Week	

*** Changes to the schedule will be announced in class ***